

High-throughput cell image analyzer usage points

Device Profile:

1. Brand and model tag :

GE Healthcare : IN Cell Analyzer 1000 and Investigator

BioTek of Agilent : LionHeart FX and Gen 5

2. Main functions :

Quickly acquire fluorescence image by high-throughput cell image acquisition system; Quantitative statistical results obtained by image analysis software.

● IN Cell Analyzer 1000 (Image acquire)

1. Light source : 100W xenon lamp.
2. Imaging System : Nikon TE 2000.
3. The objective : 4X/0.2, 10X/0.45 20X/0.45, 40X/0.6.
4. Focus : Laser-led autofocus.
5. CCD camera.
6. Plate Delivery System : observations 6-96 well plates and slide.
7. Applicable wavelength : 350/50X & 480/40X & 555/25X & 645/30X.



● IN Cell Investigator (Image analysis)

Workstation(10 module, need to follow manual suggestion.)

Cell Cycle Analysis Module

Neurite Outgrowth Analysis Module

Object Intensity Analysis Module

Micronucleus Formation Analysis Module

Morphology Analysis Module

Nuclear Trafficking Analysis Module

Dual Area Object Analysis Module

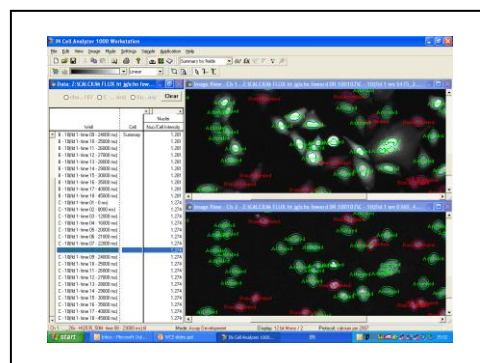
Plasma Membrane Trafficking Analysis Module

Granularity Analysis Module

Multi Target Analysis Module

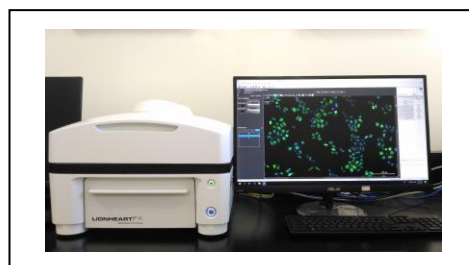
Developer(self-define module)

Depends on user's definition to analysis



● LionHeart FX and Gen 5 (Image acquire and analysis)

1. Light source : High power LED.
2. Focus : Image autofocus.
3. Camera : 16bit gray Sony CMOS.
4. Objective : 2.5X/0.12, 4X/0.13, 10X/0.3, 20X/0.45, 40X/0.6.
5. Filter cube : DAPI 377/50X, GFP 445/45X, Texas Red 586/15X, CY5 628/40X.
6. Temperature control : Room temperature to 400C, environment control.
7. Automatic displacement : 6-1536 plate 、 slides 、 chamber slide 、 3.5 cm dish.
8. Image precessing and analysis report using Gen5 software.



Location:

High throughput analysis lab, Room 0906, the 9th floor of the 1st Medical Sciences Building,
Chang Gung University.

Opening Hours:

Monday to Friday, AM 8:30 ~ PM 5:00

Terms of Use:

1. Entrust to use : Contact the equipment manager to make an appointment for the use of the machine. Then fill out an application form. Arrive at the lab to use the machine at the scheduled time.
2. Use by userself : Please read it carefully and use it according to the LionHeart FX usage points (as attached). If you violate this usage point, you will be disqualified.

Charging method:

| Fee list | CGU Labs | Global Research & Industry Alliance | Non CGU Labs |
|-----------------------|--------------------------------|-------------------------------------|---------------------------------|
| IN Cell Analyzer 1000 | Entrust to use 100 NTD/hour | Entrust to use 375 NTD/hour | Entrust to use 500 NTD/hour |
| Investigator | Entrust to use 100 NTD/hour | Entrust to use 375 NTD/hour | Entrust to use 500 NTD/hour |
| LionHeart FX | Use by userself 50 NTD/hour | Entrust to use 750 NTD/hour | Entrust to use 1000 NTD/hour |
| | Entrust to use 200 NTD/hour | | |

Note: A period of less than half an hour counts as half-hour session. You will not be charged for any extended session of previous users.

Notes:

1. We may reassign your pre-booked session to other users if you are late for more than one hour.
2. You will be disqualified from using the facilities for 6 months if you violate the terms and conditions for three times.
3. Experimental results provided by this center are for academic research only. The Center is not liable for any legal responsibility.
4. Fee and charges are subject to change. Please check our website for the latest fee information.

Contact:

Miss Hsieh

Tel: (03) 211-8800 ext. 5191

E-mail: iris@mail.cgu.edu.tw

LionHeart FX usage points

- (1) To apply for the use of this instrument, you need to read the rules of use, attend core instrument center for education and training, and apply for operational assessment. When passing the assessment, after both applyer and laboratory host agree the main points of this use, then can make an appointment and use of this instrument. Failure to pass the examination, can not operate the instrument or use the computer, and "qualified users" shall not allow "non-qualified persons" to use the instrument and computer.
- (2) Due to personal negligence caused instrument damage, need to re-assessment before they can continue to use, repair parts replacement required, parts costs borne by the laboratory.
- (3) Please check the condition of the instrument before the experiment and inventory the components. After the experiment, empty the sample cell. Strict compliance with the use points and operational procedures, and indeed fill in the experimental record sheet.
- (4) No eating or personal samples, laboratory equipment and laboratory waste, etc. indwelling laboratories to maintain laboratory cleanliness. During the experiment, you can temporarily put your personal experimental apparatus in a basket or container and place it on the instrument table. Be sure to return to the original state after the experiment is over.
- (5) In the event of an unexpected situation, please notify the instrument manager. It is forbidden to open any laboratory drawers to use any apparatus and consumables.
- (6) In the event of an unexpected situation, please notify the instrument manager. It is forbidden to open any laboratory drawers to use any apparatus and consumables.
- (7) Please respect all the instrument users, do not sign or use other's name to book for a long time occupying the instrument. If experimental needs, managers can be assisted. Do not fake or technical violations, so as not to be recorded violation.
- (8) No reservation for instrument, may not use the instrument. If you are unable to use the reservation after registration, please cancel 24 hours in advance. Absent for no reason without cancellation, record violation once. The qualified users of the same laboratory may use the time of appointment of the laboratory colleagues, but their name and usage time shall be truthfully filled in the experimental record sheet. Otherwise, both the appointment and the non-appointment will be counted as violations.
- (9) For six consecutive months unused, please re-apply for operational assessment. After pass the assessment, then can use this instrument.

(10) For the first time, this instrument shall not be used for one week from the day when the key points are violated. Second time, the instrument shall not be used for two consecutive weeks from the date of the violation of the key points of use. If the violation accumulates for more than 3 times, the use of this instrument is lost the qualifications of the instrument must be re-applied for operational assessment, After pass the assessment, then can use this instrument.

(11) Regardless the sample or experimental data or any derived loss caused by the hardware or software failure, the instrument manager should "NOT" compensate or assume any legal responsibility. The experimental results are for academic research only, not for other purposes.

(12) Clear the image analysis file of the previous month at the beginning of each month, please back up your personal files.

(13) If there are any problems in this rule, core instrument center may change it according to the situation and amend the use points without any notice. Others, such as laboratory safety regulations, please comply with "Chang Gung University Health and Safety Code of Practice".

<http://safety.cgu.edu.tw/files/15-1017-3548,c206-1.php?Lang=zh-tw>

(14) Each laboratory host using our core instrument center equipment in the published papers, in the "Acknowledgment " set out the use of the core instrument and center resources. Core instrument center in the English name is as follows :

Instrumentation Center, Chang Gung University, Tao-Yuan, Taiwan.

(15) This point applies to all units within the Chang-Gung system, please cherish the use. Entrusted users please contact the equipment manager.

The fees are as follows :

| Fee list | CGU Labs | Global Research & Industry Alliance | Non CGU Labs |
|------------------------|---------------------------------|---|---------------------------------|
| LionHeart FX & Gen5 | Use by user self 50 NTD/hour | Entrust to use 750 NTD/hour | Entrust to use 1000 NTD/hour |
| | Entrust to use 200 NTD/hour | | |

Equipment manager : Miss Hsieh

Tel : (03) 211-8800 ext. 5191

Email : iris@mail.cgu.edu.tw.