

High-throughput cell image analyzer for use

Device Profile:

1. Brand and model tag : GE Healthcare produced IN Cell Analyzer 1000 and the Investigator. BioTek Instruments produced LionHeart FX.
2. Main functions : Quickly acquire fluorescence image by high-throughput cell image acquisition system; Quantitative statistical results obtained by image analysis software.

IN Cell Analyzer 1000 (Image acquire)

1. Light source : 100W xenon lamp.
2. Imaging System : Nikon TE 2000.
3. The objective : 4X/0.2, 10X/0.45 20X/0.45, 40X/0.6.
4. Focus : Laser-led autofocus.
5. CCD camera.
6. Plate Delivery System : observations 6-96 well plates and slide.
7. Applicable wavelength : 350/50X & 480/40X & 555/25X & 645/30X.



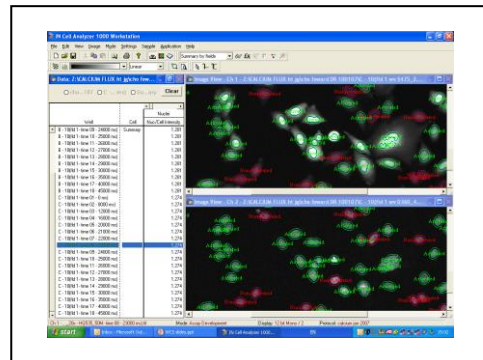
IN Cell Investigator (Image analysis)

Workstation(10 module, need to follow manual suggestion.)

- Cell Cycle Analysis Module
- Neurite Outgrowth Analysis Module
- Object Intensity Analysis Module
- Micronucleus Formation Analysis Module
- Morphology Analysis Module
- Nuclear Trafficking Analysis Module
- Dual Area Object Analysis Module
- Plasma Membrane Trafficking Analysis Module
- Granularity Analysis Module
- Multi Target Analysis Module

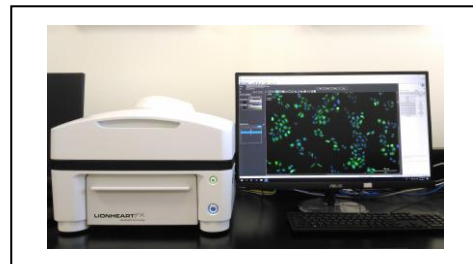
Developer(self-define module)

Depends on user' s definition to analysis



LionHeart FX (Image acquire and analysis)

1. Light source : High power LED.
2. Focus : Image autofocus.
3. Camera : 16bit gray Sony CMOS .
4. Objective : 2.5X/0.12, 4X/0.13, 10X/0.3, 20X/0.45, 40X/0.6.
5. Filter cube : DAPI 377/50X, GFP 445/45X, Texas Red 586/15X, CY5 628/40X.
6. Temperature control : Room temperature to 40⁰C, environment control.
7. Automatic displacement : 6-1536 plate 、 slides 、 chamber slide 、 3.5 cm dish 、 6 cm dish 、 T25 flask.
8. Image precessing and analysis report using Gen5 software.



Location:

The IN Cell 1000 Analyzer Lab, Room 0906, the 9th floor of the 1st Medical Sciences Building.

Opening Hours:

Monday to Friday, AM 8:30 ~ PM 5:00

Terms of Use:

1. Entrust to use : Contact the equipment manager to make an appointment for the use of the machine. Then fill out an application form. Arrive at the lab to use the machine at the scheduled time.
2. Use by userself : Please read it carefully and use it according to the LionHeart FX usage points. If you violate this usage point, you will be disqualified..

Charging method:

Fee list	CGU Labs	Non CGU Labs
IN Cell Analyzer 1000	Entrust to use 100 NTD/hour	Entrust to use 500 NTD/hour
Investigator	Entrust to use 100 NTD/hour	Entrust to use 500 NTD/hour
LionHeart FX	Use by userself 50 NTD/hour	Entrust to use 1000 NTD/hour
	Entrust to use 200 NTD/hour	

Note: A period of less than half an hour counts as half-hour session. You will not be charged for any extended session of previous users.

Notes:

1. We may reassign your pre-booked session to other users if you are late for more than one hour.
2. You will be disqualified from using the facilities for 6 months if you violate the terms and conditions for three times.
3. Experimental results provided by this center are for academic research only. The Center is not liable for any legal responsibility.
4. Fee and charges are subject to change. Please check our website for the latest fee information.

Contact:

Miss Hsieh

Tel: (03) 211-8800 ext. 5191

E-mail: iris@mail.cgu.edu.tw